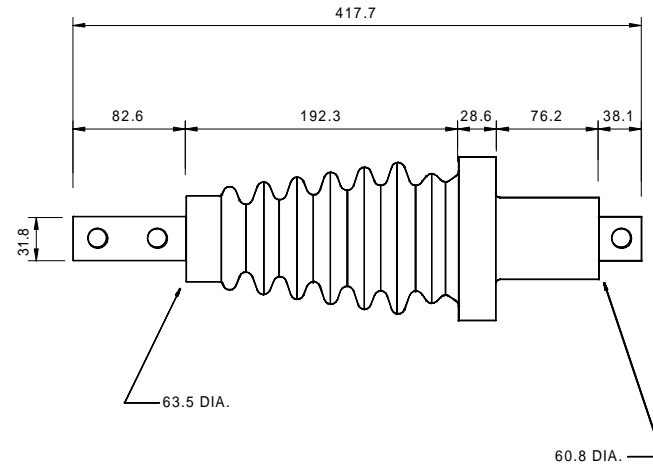


12.7 DIA. HOLE CONCENTRIC WITH
A 17.5 DIA. X 4.8 DEEP RECESS
4 TOTAL ON A 120.65 DIA. B.C.
(2° MAX. DRAFT ON THRU HOLE)



TANK OPENING:	65.0
CONDUCTOR:	MACHINED COPPER
PLATING:	TIN
MATERIAL:	INDOOR EPOXY
STD. COLOUR:	GREY
CURRENT RATING:	500 AMPS
B.I.L.	150 k.V.
VOLTAGE CLASS:	27.5 k.V.
OTHER:	

IMPORTANT

All information supplied by Crosslink Technology Inc. is furnished upon the express condition that the person receiving the product shall make his own assessments to determine its suitability for his particular purpose. No warranty is expressed or implied regarding such information or product; the results to be obtained from the use thereof; any product, as to its being merchantable or fit for any particular purpose; the use of such information or product not infringing any patent.



CROSSLINK TECHNOLOGY INC.

TITLE: 85-168		REVISION: 0
DESCRIPTION: POWER BUSHING		
DIMENSIONS: Millimeters	SCALE: NOT TO SCALE	
DATE: DEC. 5/97	SIGNED:	
TOLERANCE: 0.000 = +/- 0.005 ; 0.00 = +/- 0.05 UNLESS OTHERWISE SPECIFIED		