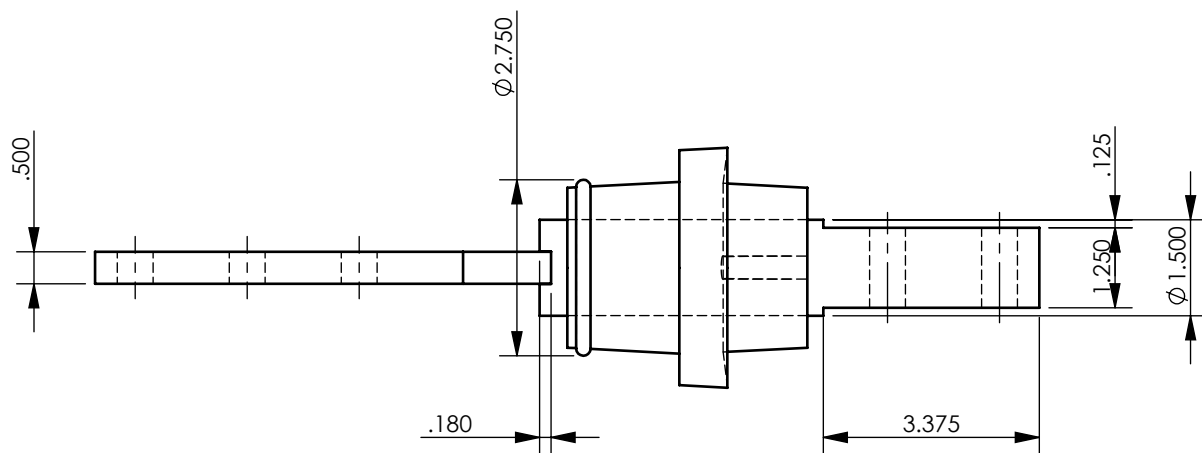
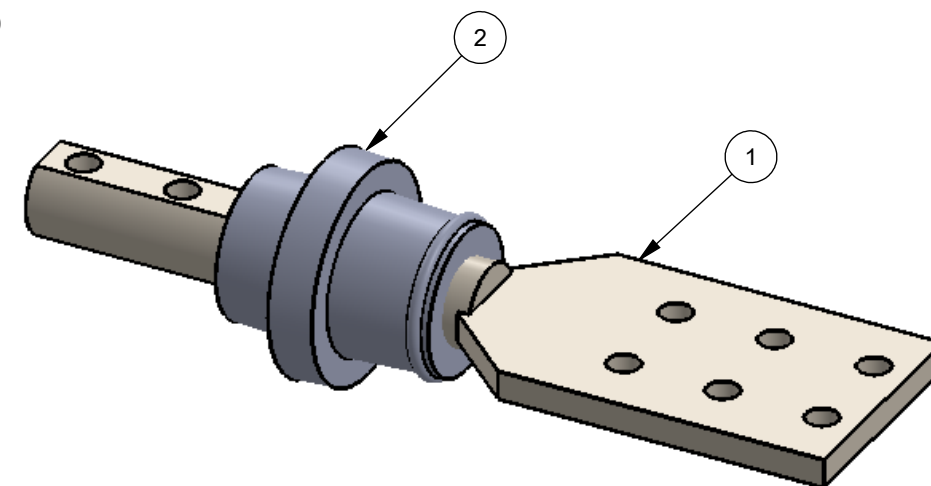
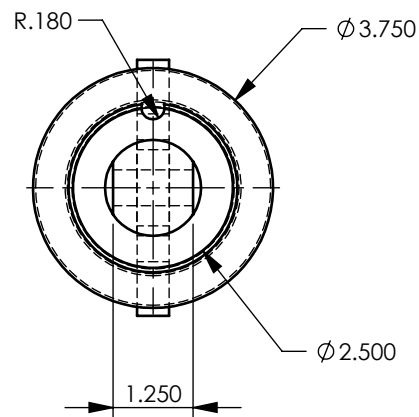
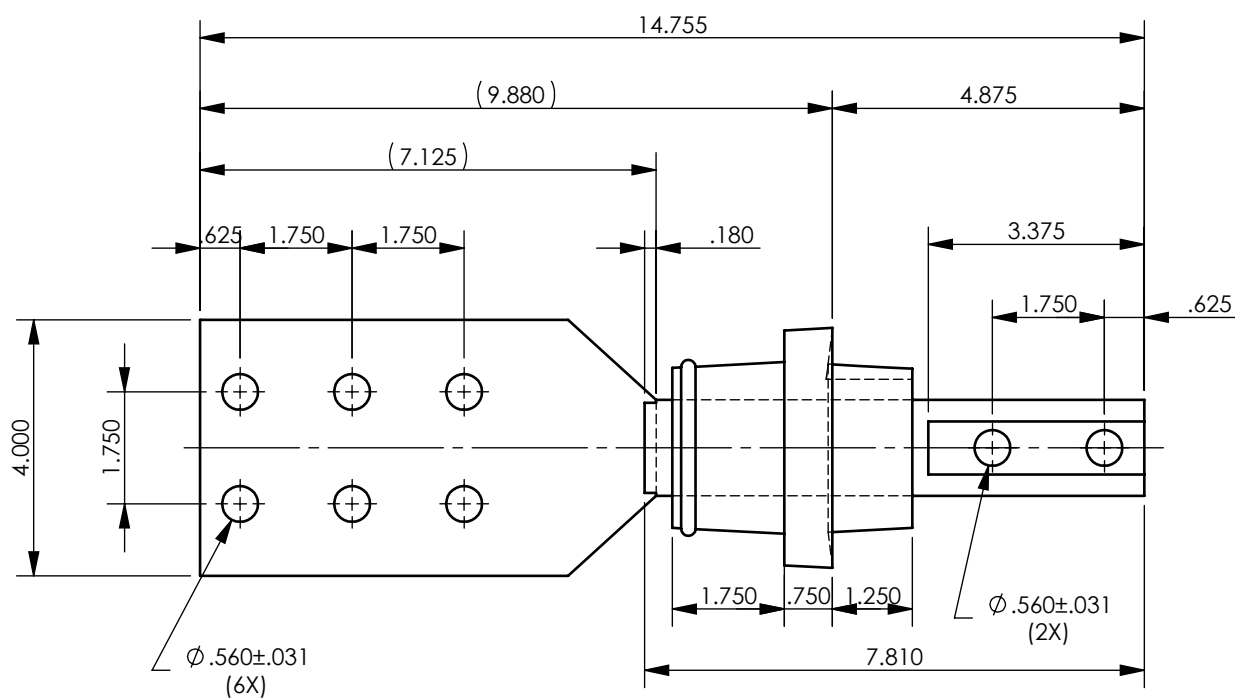

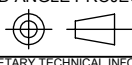


ITEM NO.	PART NUMBER	DESCRIPTION	MATERIAL	QTY.
1	CU 335	TIN PLATED COPPER CONDUCTOR	B187 HARDDRAWN	1
2	1331-6010	BODY TYPE	INDOOR EPOXY	1



TANK OPENING	2.625"
PLATING	TIN
CURRENT RATING	1600 AMPS
B.I.L	30/ 45 KV
VOLTAGE CLASS	1.2 KV

ALL DIMENSIONS ARE IN INCHES.		ASSEMBLY NO: -		CROSSLINK TECHNOLOGY INC 
GENERAL TOLERANCES: THREE PLACE DECIMAL ±0.005 TWO PLACE DECIMAL ±0.05 ANGLES ±0.5° UNLESS SPECIFIED OTHERWISE.		QA: -		
THIRD ANGLE PROJECTION: 		MATERIAL: SEE BOM		
PROPRIETARY TECHNICAL INFORMATION TO BE MAINTAINED IN CONFIDENCE AND NOT DISCLOSED TO ANY THIRD PARTY. ©		FINISH: -		
REV. NO:	REVISION DESCRIPTION:	REVISED BY:	REVISION DATE:	DESCRIPTION: L.V. BUSHING
				DWG NO. / PART ID: 16C06i60335
				WEIGHT: -
				SCALE: 1:3
				DRAWN: S.C. APPROVED: K.E. DATE: -
				SIZE SHEET B 1 OF 1

8 7 6 5 4 3 2 1

8 7 6 5 4 3 2 1